



# MY DIGITAL WORKFLOW

STEVE PROCTOR DPAGB BPE4

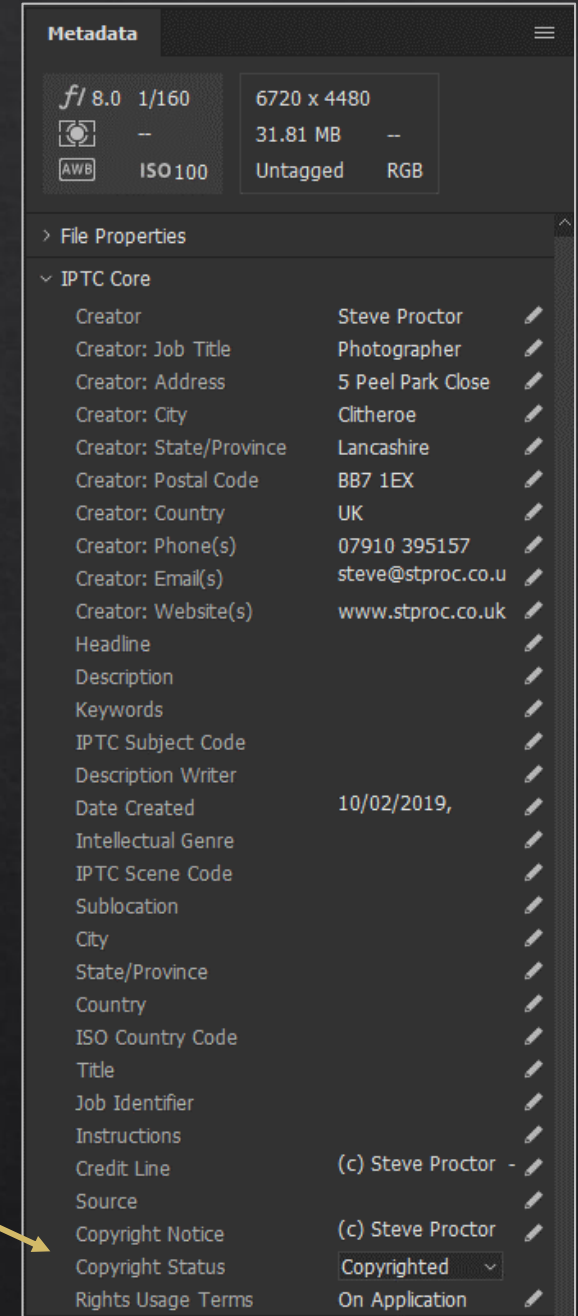
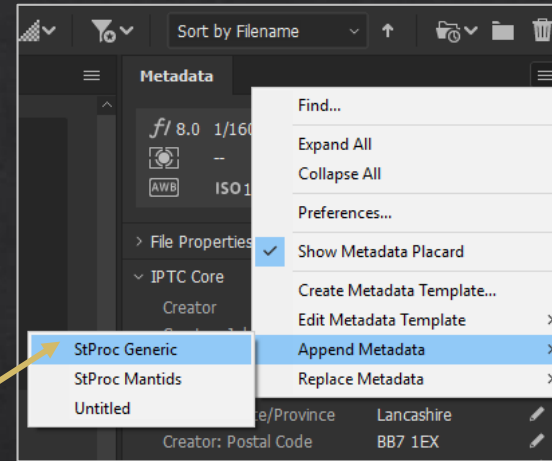


# POST PROCESSING WORKFLOW



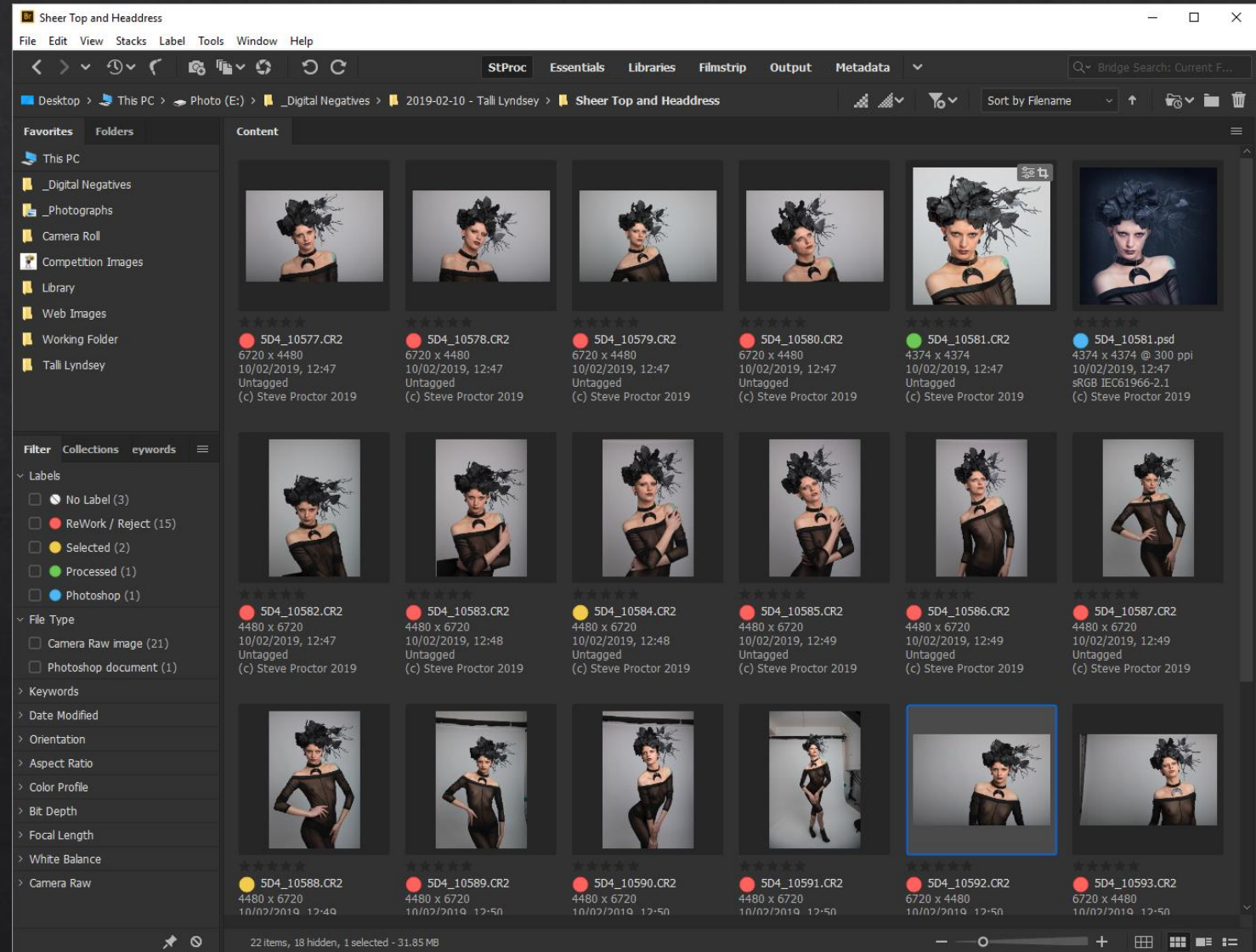
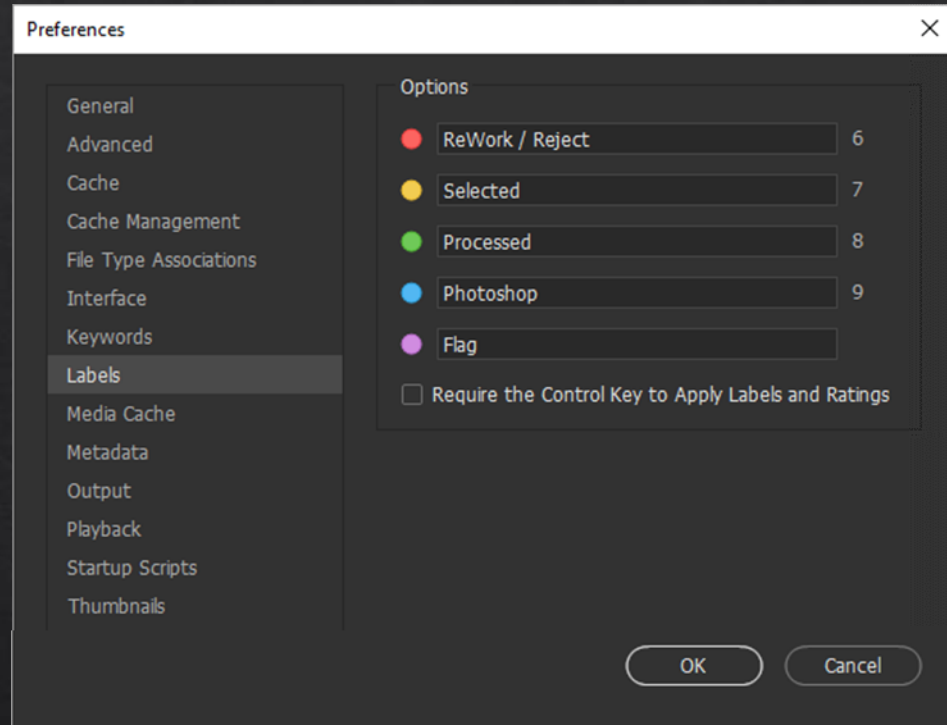
# ADD GENERIC TAGS

- Adding the general tags at this stage saves adding them to variant files at a later time.
- Set up a 'generic' set of tags and save them to re-use on all image files.
- Include copyright details. Copyright is changing across the UK, Europe and the world on a regular basis and will probably continue to do so.

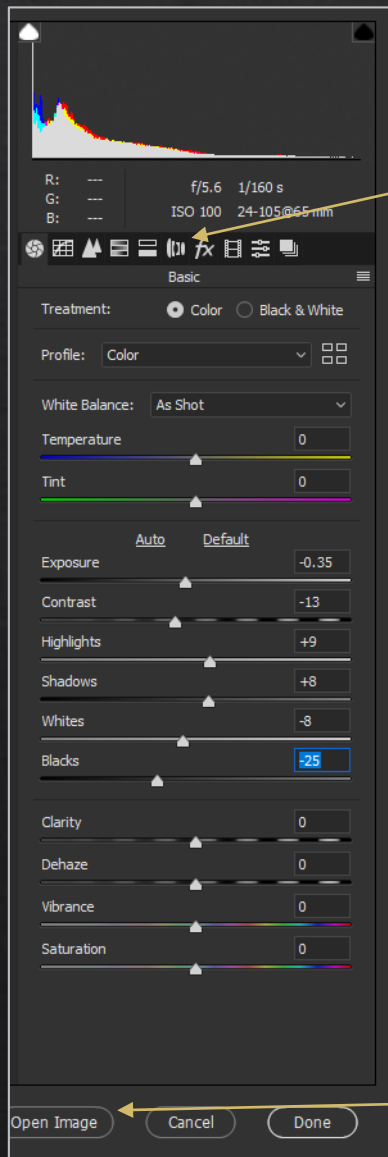




# SELECTING THE IMAGES USING ADOBE BRIDGE



# GENERAL PROCESSING IN ACR



Set lens corrections.

Select Colour Profile to suit.

Set the basic exposure settings to achieve required look.

Don't apply these at this stage.

Open Image to further process in Photoshop.

RAW Image



Crop Edit

# RETOUCHING

Lift exposure of  
shadow areas

Remove skin  
blemishes

Reduce highlights  
from the arms  
and chest area



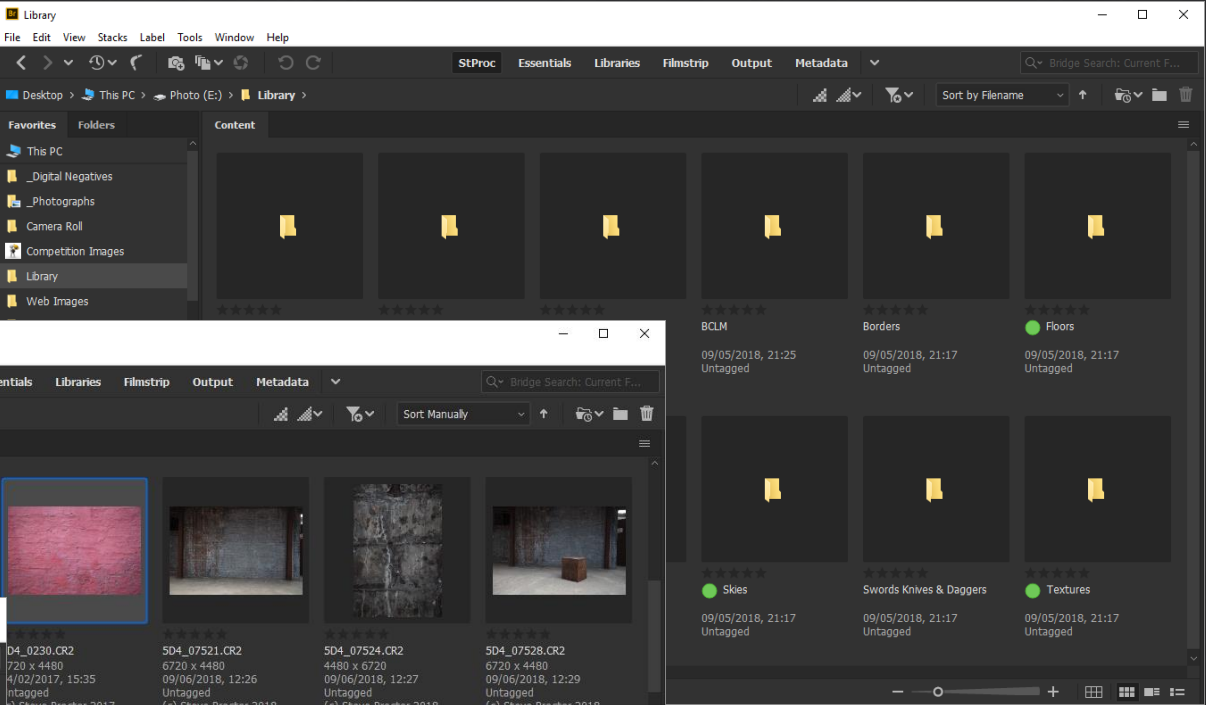
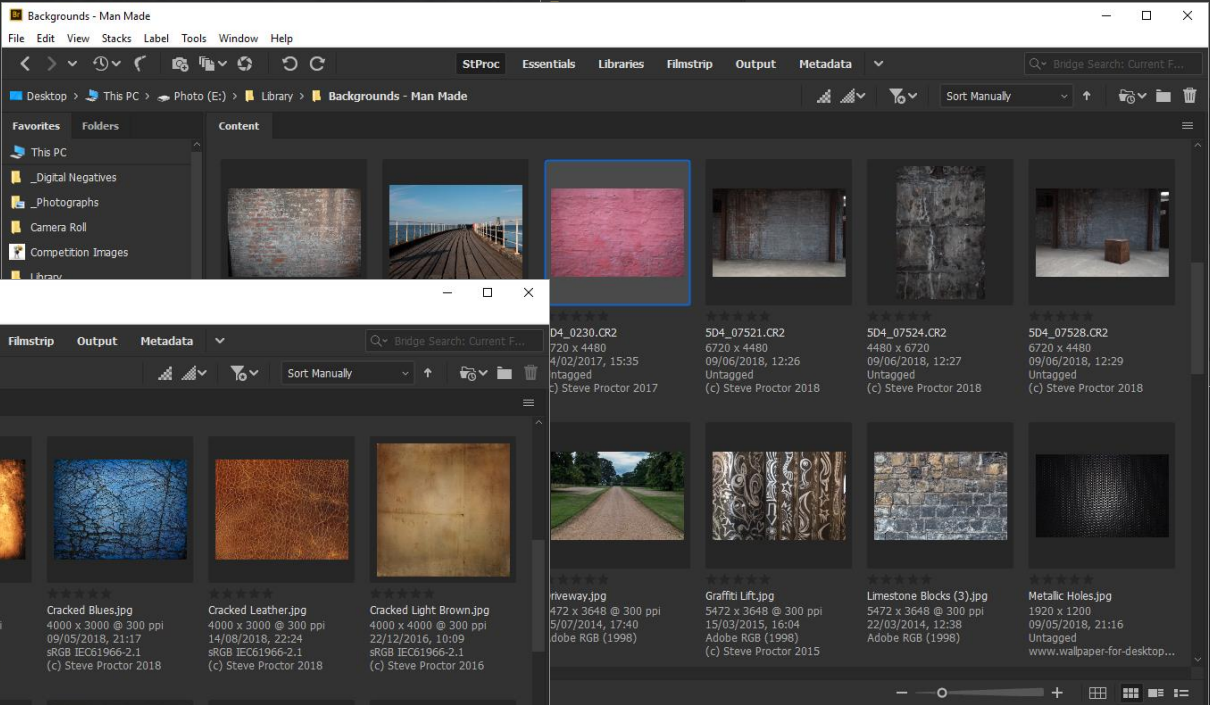
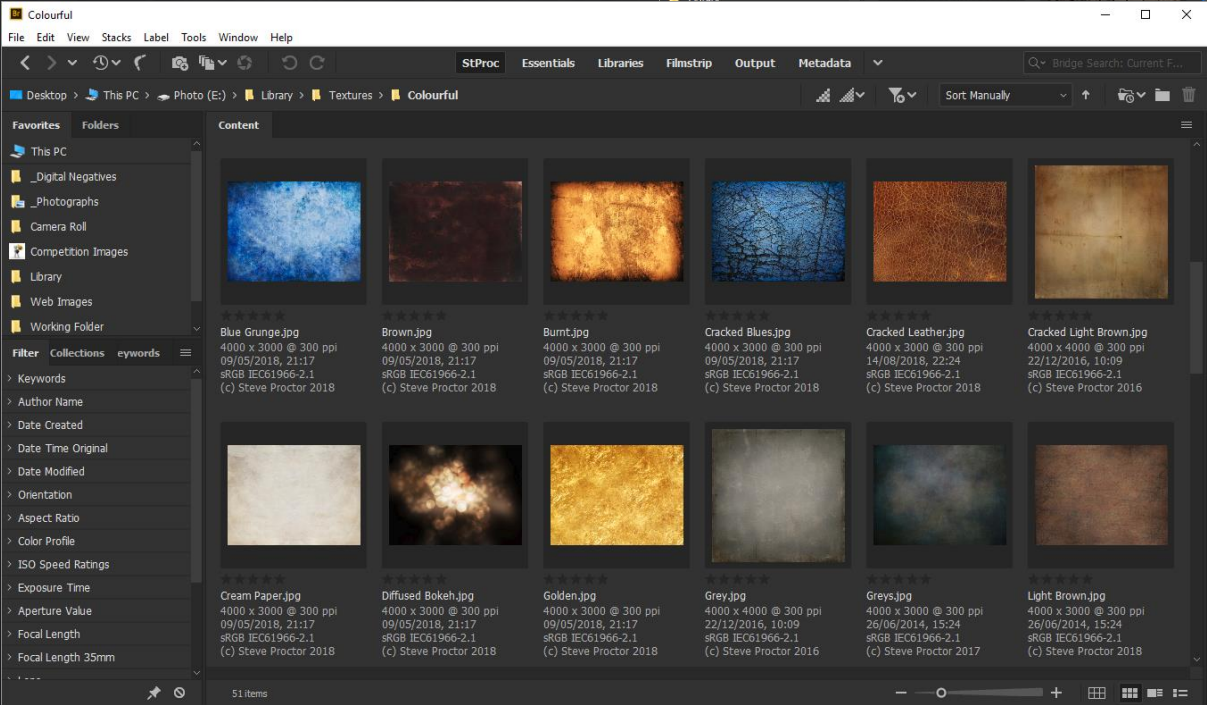
Reduce highlights  
from the skin

Increase brightness  
of the eyes

Smooth the skin on  
a separate layer  
then reduce opacity  
to 40 – 70%



# COMPOSITING



## LIBRARY

## BACKGROUNDS

## TEXTURES

# STYLISING



Bring out detail in  
headdress

Add textured  
backdrop

Reduce  
brightness of  
arms and chest

Clone out the  
light areas

Bring out detail in  
dress





# CREATE HIGH AND LOW QUALITY JPGs

Full Sized Image  
6720 x 4480 px, Quality = 12 (full)



Personal use on home PC, iPad,  
etc...

Web Sized  
1600 x 1200 px  
Quality = 6-8  
**Watermarked**



Web use on  
Website, Flickr,  
Facebook, etc...

Comp Sized  
1600 x 1200 px  
Quality < 1Mb



Competition use in Club, Federation,  
Exhibitions, etc...

Comp Sized  
1400 x 1050 px  
Quality < 1Mb



Record  
640 x 480 px  
Quality = 5-6



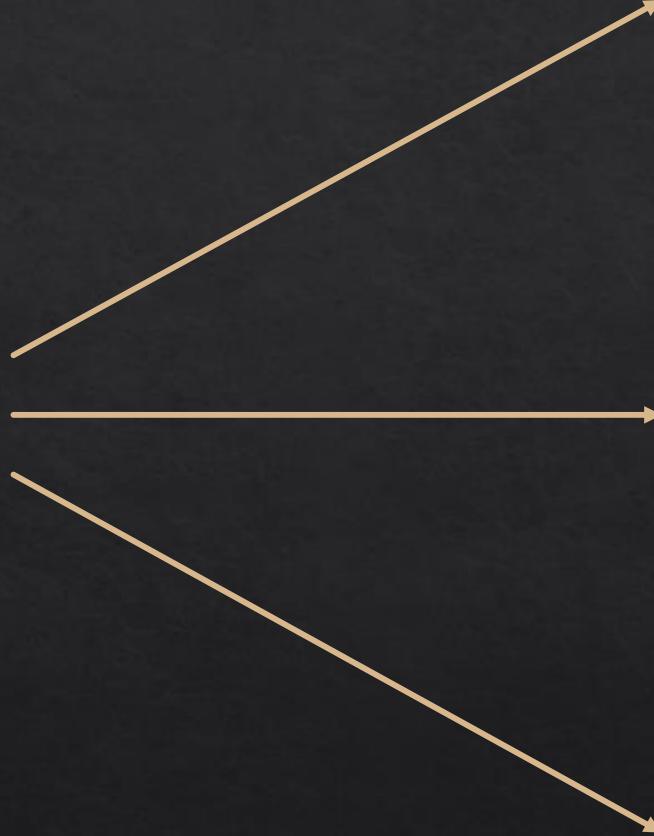
Used to log  
entries in  
various comps

**Ps** Photoshop Action

# CREATE 3 BACKUP COPIES



Original Copy on PC / Laptop



Back-Up 1  
Local Hard Drive  
External to PC



Back-Up 2  
NAS on Home  
Network



Back-Up 3 (Key Files)  
External Hard Drive  
Stored Off-Site



# SHARING

## CRITIQUE

### Fresh Eyes

*Opportunities for improvement*

*Club Critique groups*

*Other Photographers*

*Look at it yourself from different perspectives*

## PUBLISHING

### Friends & Family

*My Website*

*Social Media*

*Share with Subjects / Models*

*Camera Club sites*

*Flickr / Purpleport / Instagram*

## COMPETITION

### Reward & Recognition

*Club Competitions*

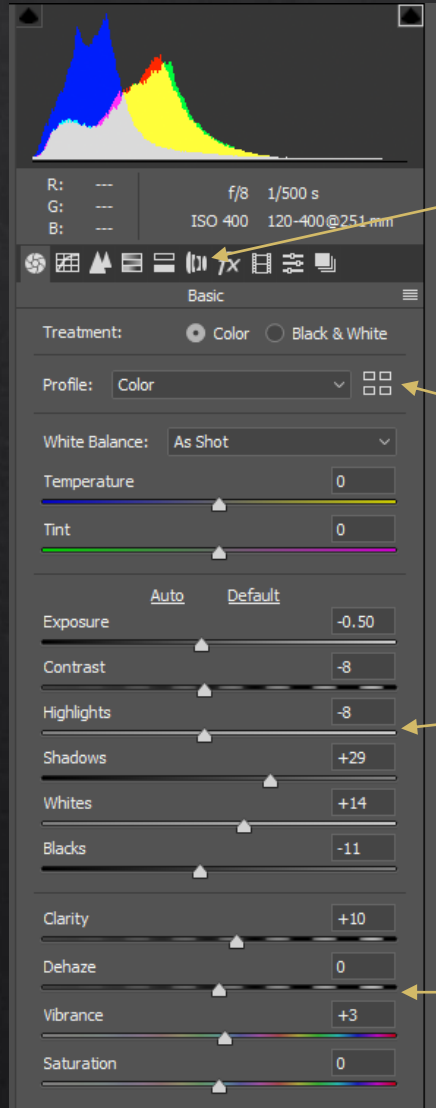
*Federation Competitions*

*Online Competitions*

*BPE / FIAP / PSA Exhibitions*

*Accreditations*

# SILVERBACK — GENERAL PROCESSING IN ACR



Set lens corrections.

Select Colour Profile to suit.

Set the basic exposure settings to achieve the required look.

Minimal changes here



Camera Image



Cropped Edit

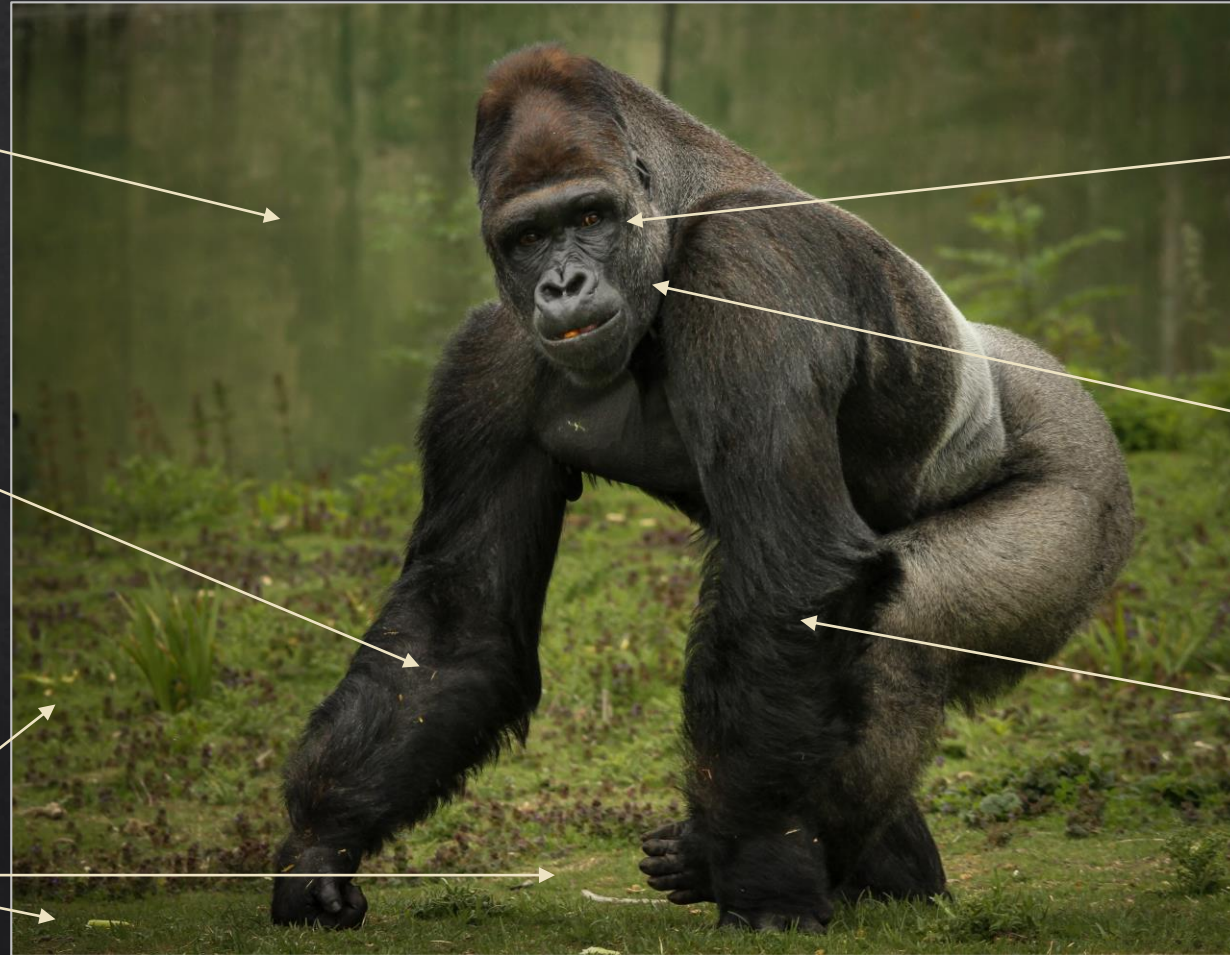


# SILVERBACK — FURTHER PROCESSING IN PHOTOSHOP

Darken the background

Remove fur blemishes

Remove distracting elements



Increase brightness of the eyes

Sharpen facial area

Pull out more detail in the fur



# SILVERBACK — THE FINISHED IMAGE







# MY DIGITAL WORKFLOW

STEVE PROCTOR DPAGB BPE4

